

# DINEX

CRANE

DINEX CRANE company was established in June 2012 with the support of the Korean Crane Association (KCA), to unite the best of engineers with experience in the design of Korean cargo cranes, in such well-known companies as Kanglim, Soosan, Donghae.

The company "DINEX CRANE" has two factories for the production of truck mounted cranes, with a team total of about 250 people. Facilities are equipped with the most modern equipment and include design, engineering, manufacturing and assembly plants. The company has a complete production cycle and able to produce all the components from a basic part up to a cylinder. It is made in one place at one time, and does not depend on the time of components supply and fulfil the commitments to customers on time.

## Truck Mounted Cranes

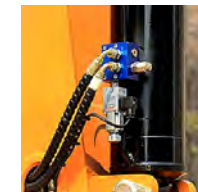
Made in South Korea



- Presize load positioning
- Multi-level safety system
- Boom telescoping sensor
- Wire wind control
- Tensosensor
- Folding outriggers
- Hexagonal boom profile
- Minus Boom\*
- Hook lifting distance limitation system
- Optional Basket
- Top seat

.....  
\* DH86H, DH87H models

#810 Daeryung Post Tower 2nd, 306, Digital-ro, Guro-gu, Seoul, 152-790, South Korea  
Tel.: +82-2-830-4305, Fax: +82-2-725-2224  
dinexcrane@gmail.com  
<http://www.dinexcrane.com>



# Truck Mounted Cranes

Made in South Korea



## TRUCK MOUNTED HYDRAULIC TELESCOPING CRANE

Model		DH34	DH76	DH76L	DH86H	DH87H
Max lifting capacity (ton/m)		7.0	11.0	15.5	18.0	18.0
Max working height (m)		14.4	10.4	22.0	22.0	24.6
Max working radius (m)		12.2	8.1	19.6	19.8	22.5
Lifting capacity by sections (kg/m)	max	3200/2.5	4900/3.5	7000/2.0	7000/2.4	7000/2.4
	1	2390/3.4	3405/4.5	3405/4.5	3935/4.7	3740/5.0
	2	1280/5.6	1670/7.5	1670/7.5	2080/7.7	2060/7.9
	3	850/7.8	1060/10.5	1060/10.5	1230/10.7	1300/10.9
	4	690/10.0	740/13.5	740/13.5	835/13.7	870/13.9
	5	520/12.2	510/16.6	510/16.6	580/16.8	600/16.7
	6	-	370/19.6	370/19.6	400/19.8	400/19.6
	7	-	-	-	-	260/22.5
Truck payload (kg)		Above 4500		Above 7000		
<b>BOOM</b>						
Number of sections		5		6		7
Structure		3 cylinders 1 wire		3 cylinders 2 wires		3 cylinders 3 wires
Lifting angle/speed (deg)			0 ~ 80°		-16 ~ 79°	
Shape		hexagonal		hexagonal		
Rotation speed (rpm)			2.0		1.8	
<b>OUTRIGGERS</b>						
Supply scope		Main 2EA		Main 2EA + Rear 2 EA		
Movement	Horizontal	Hydraulic		Hydraulic		
	Vertical					
<b>HYDRAULIC FLUID (OIL)</b>						
Rated oil flow (l/min)		45		51		
Rated pressure (kgf/cm <sup>2</sup> )		210				